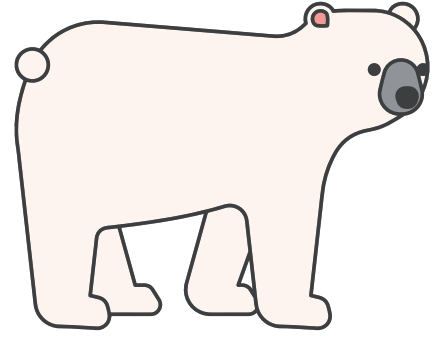


# That's not **MY** Polar Bear!



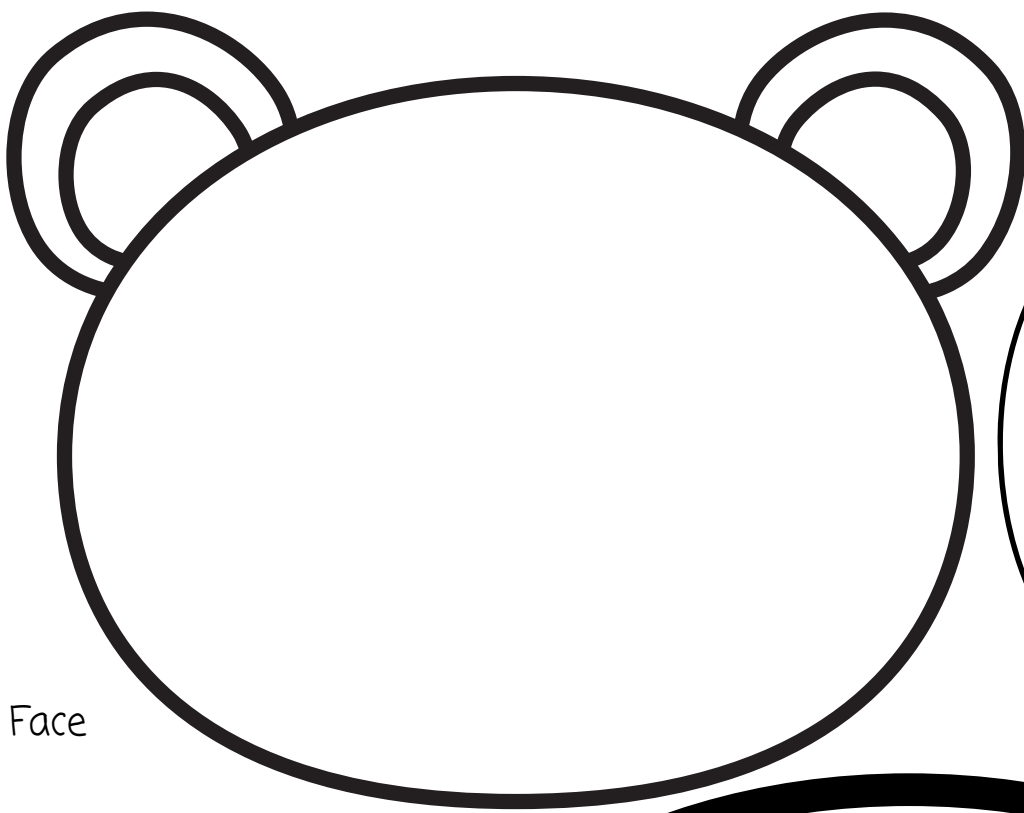
## SUPPLIES:

- Printed out pages
- Scissors
- Crayons
- Glue Stick
- Various tactile objects
  - i.e. fabric, tinfoil, buttons, feathers, etc..

## DIRECTIONS:

- Cut out the polar bear pieces.
- Glue the bear together on a piece of paper.
- Have students use crayons, or various tactile art pieces to create their own "That's not my polar bear" page.
- Example: using tinfoil the students could say: "That's not my polar bear! It's ears are too shiny!"

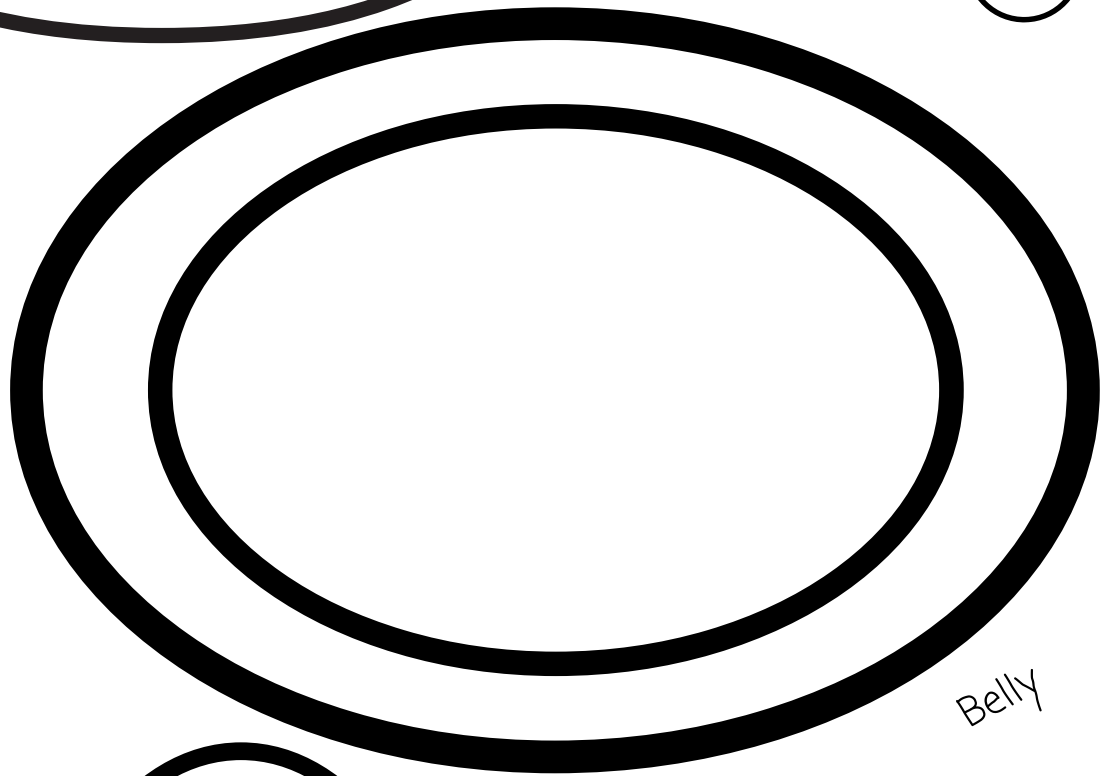
Eyes and Snout



Face



Paws



Belly

